

MINIMUM MANHOLE DIAMETERS

REFER TO PLAN FOR SPECIFIC SIZING REQUIREMENTS

M.H. INSIDE DIAMETER	MAX. PIPE DIAMETER
48"	30"
60"	36"
72"	48"
84"	54"
90"	60"
96"	60"

NOTES:

1. A DROP M.H. SHALL BE CONSTRUCTED IN SEWERS WHEREVER THE DISTANCE BETWEEN INVERTS IS 2.5' OR GREATER.
2. ALL SECTION SHALL BE PRECAST CONFORMING TO C-478
3. ALL EXTERIOR SANITARY JOINTS SHALL BE SEALED IN A RUBBERIZED WATER PROOFING WRAPING AROUND CASTING JOINTS AND RISER SECTION.

OFFSET:
OFFSET SHALL BE SET TO AVOID SIDEWALK OR UNDERDRAINS.

ALL HOLES FOR PIPE TO MANHOLE CONNECTIONS ARE TO BE CORED AT THE TIME OF PRECAST MANUFACTURE. THESE CORED HOLES SHALL HAVE MEASURED ALONG THE INSIDE PERIMETER OF THE MANHOLE A MINIMUM DISTANCE OF 8" BETWEEN ADJACENT HOLES. MINIMUM MANHOLE DIAMETERS SHALL BE INCREASED ACCORDINGLY

FRAMES:

SANITARY & STORM FRAME 1022Z1
SANITARY MANHOLE - SOLID LID/WATERTIGHT EJ 1020AGS WITH WORD "SANITARY" OR VENTED LID EJ 1020B WITH WORD "STORM" OR APPROVED EQUAL SET ON BUTYL SEALANT BED

GRADE ADJUSTMENT BY USE OF:

PRECAST CONCRETE ADJUSTING COLLARS OR POURED IN PLACE SET ON BUTYL SEALANT BED PER ASTM C-478
FINAL HEIGHT ADJUSTMENT 1/2" RUBBER RISER RING
WATERPROOFING TAR TO BE USED ON OUTSIDE OF CASTING AND RISER CONE ONLY
THE USE OF ANY BRICK IS NOT ALLOWED

MANHOLE STEPS: M.A. INDUSTRIES, INC. PS1-PF POLYPROPYLENE PLASTIC OR APPROVED EQUAL

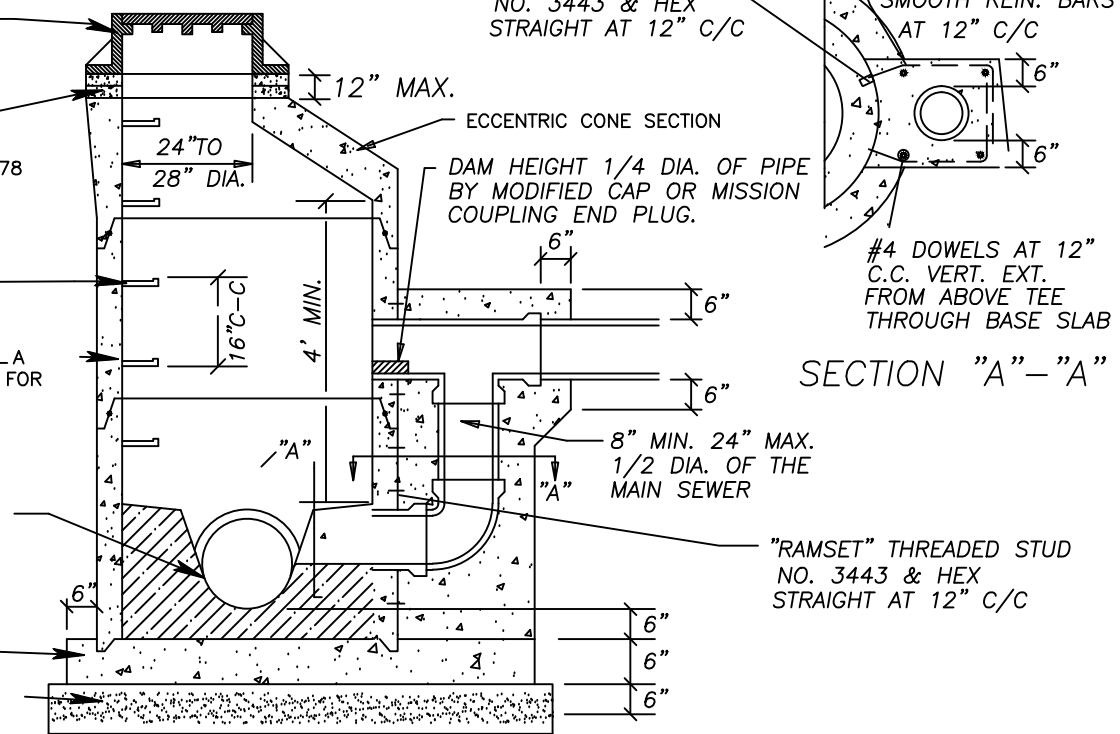
PRECAST SECTIONS TO CONFORM TO ASTM C-478 WITH A RESILIENT GASKET JOINT CONFORMING TO ASTM C-443 FOR SAN. M.H. AND BITUMASTIC TYPE JOINT FOR ST. M.H., CYLINDRICAL SECTION OF MANHOLE TO BE EXTENDED VERTICALLY FROM INVERT SHELF A MINIMUM OF 4'0".

MANHOLE JOINTS:

MANHOLE TO PIPE OR PIPE TO PIPE JOINT SHALL BE A WATER TIGHT CONNECTION PROVIDING A FLEXING AND LATERAL MOVEMENT WITHOUT SHEARING OF THE SEWER PIPE SUCH AS "RES-SEAL," "KOR-N-SEAL," "DURASEAL," MISSION CUPLINK OR APPROVED EQUAL.

AGGREGATE:

CRUSHED STONE AGGREGATE NO. 67, THOROUGHLY COMPACTED (NO SLAG), INSTALLED PER ASTM D-2321.



SECTION "A" - "A"